

USER MANUAL



Thank you for choosing Better Bathrooms.
Please read this manual before installing your product
and keep for future reference.

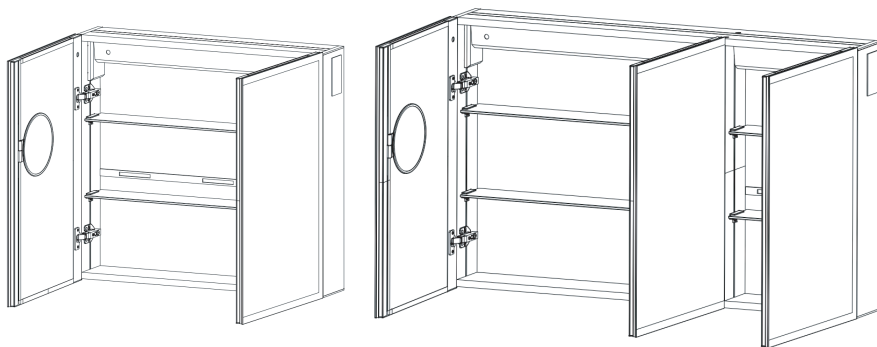
**better
bathrooms**

WALL MOUNTED LED MIRRORED CABINET WITH SHAVER SOCKET, WIRELESS AND MAGNIFIER

BeBa_27590

BeBa_27591

BeBa_27592



- **Multi person assembly**
- **Tools required**
- **We always recommend using professional tradespeople to install your product**

20251210

Congratulations on your purchase

And welcome to our growing gang of savvy shoppers

We're on a mission to bring you extraordinary bathroom products, for less. From modern to traditional style ceramics, plus the gorgeous fixtures, fittings and furniture to match. So, you can fall in love with your space every single day.

As one of the UK's largest independent bathroom stores, we've received countless awards; including the National Business Awards UK, the Digital Entrepreneur Awards and being placed on The Sunday Times Fast Track 100.

We hope your new product goes above and beyond your expectations. However, should any problems occur, please:

- log in to your account and contact our customer services team via your self-serve portal – betterbathrooms.com/CustomerAccount/Login
- contact us via betterbathrooms.com/content/contact-us

Important information

- Please read these instructions thoroughly and retain for future reference
- Please note that the maximum safe loading weight for the unit is 10.5kgs
- Please note that the maximum safe loading weight for each shelf is 3.5kgs
- Always check for pipes and cables before drilling

CONTENTS

SAFETY	3
BATHROOM ZONES	4
PARTS SUPPLIED	5
TOOLS REQUIRED	5
INSTALLING THE CABINET	6
SENSOR CONSIDERATIONS	7
DOOR ADJUSTMENT	7
SHELF ADJUSTMENT	7
OPERATION	8
CLEANING AND MAINTENANCE	8
TECHNICAL SPECIFICATIONS	9

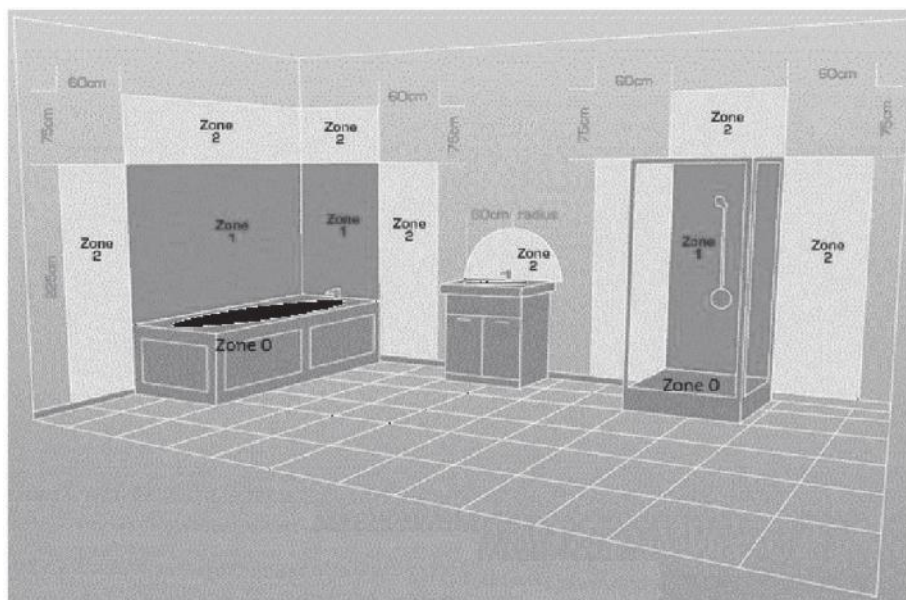
SAFETY

- This cabinet should be installed by a qualified electrician.
- This fitting is only suitable for connection to a 220-240V earthed supply in accordance with current IEE wiring regulations, and should be installed in accordance with local Building Regulations.
- This is for domestic, indoor use only.
- The cabinet should be connected to a dedicated lighting circuit which must be protected by a 5-amp fuse (or a 6 amp miniature circuit breaker).
- The electrical connection must be an adequate distance from the rear of the cabinet to prevent the risk of shorting with the cabinet's casing.
- Before installing the fitting ensure that the mains supply is switched off, and that the appropriate fuse is removed (or appropriate circuit breaker is switched off) before commencing installation. Ensure that measures are taken to prevent the supply from being inadvertently reconnected.
- If there is a "Minimum Distance" label, please do not allow flammable materials to rest within that distance from the unit.
- This product may contain delicate parts – be careful during handling and maintenance to avoid breakage.
- Ensure the cover for the shaver socket is closed when not in use to prevent moisture from entering it.
- Only connect items designed to be used with a shaver socket (Such as shavers or electric toothbrushes).
- The shaver socket is not earthed and provides 230V at a maximum current of 80mA. Do not connect devices which require a higher current, different voltage, or an earth connection.
- If any modification is made to the fitting it will invalidate the warranty and may render the product unsafe.
- A defective appliance may cause electric shock. Never switch on a defective or damaged appliance. Disconnect the appliance from the mains before seeking assistance.
- This product is IP44 rated, and no part of the installation is allowed to be within bathroom Zones 0 or 1. Installation is permitted within Zone 2.
- This product must be earthed. Before commencing installation, ensure that there are no pipes or wires located behind the wall that may be damaged during drilling.
- Ensure that the hanging location has been decided upon and marked clearly to avoid unwanted damage to the wall due to incorrect positioning.
- Inspect the cabinet to ensure there are no signs of damage prior to installation.
- Take care unpacking, do not use a sharp blade to open as this may damage the

product and void your warranty.

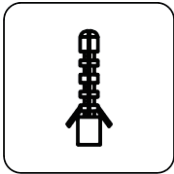
- Once installed a bead of silicon can be applied between the cabinet and the wall across the top and sides of the unit. Never seal the bottom of the cabinet to the wall, as this may allow water to accumulate behind the unit.

BATHROOM ZONES



Zone 0:	The interior of the bathtub or shower basin.
Zone 1:	The area around the bathtub or shower basin up to a height of 2.25m above the floor
Zone 2:	The area stretching to 0.6m outside the bath or shower and above the bath or shower if over 2.25m

PARTS SUPPLIED



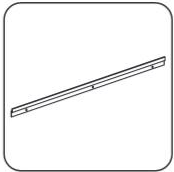
WALL PLUGS

BeBa_27590: 4
BeBa_27591: 6
BeBa_27592: 6



SCREWS M5

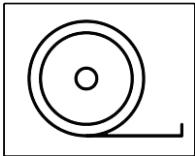
BeBa_27590: 4
BeBa_27591: 6
BeBa_27592: 6



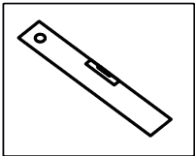
ALUMINIUM BAR

PLEASE NOTE: It is the installers responsibility to ensure that the fittings are suitable for the type of wall. Alternative fittings may be required (Not Supplied). If unsure professional advice should be sought.

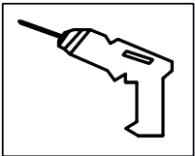
TOOLS REQUIRED



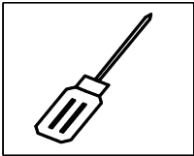
TAPE MEASURE



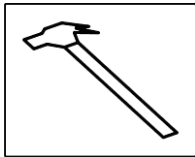
SPIRIT LEVEL



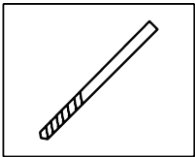
ELECTRIC DRILL



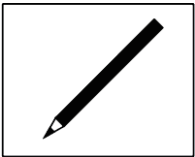
SCREWDRIVER



HAMMER



8mm DRILL BIT



PENCIL

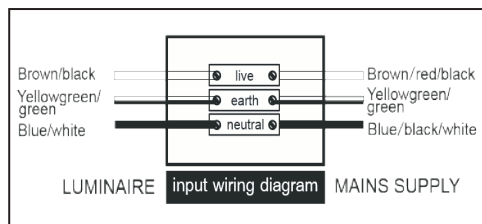
INSTALLATION

The cabinet is supplied with a hanging bar to mount the cabinet onto the wall. At the back of the cabinet there is a corresponding bar which is designed to slot onto the hanging bar.

1. Choose the desired position of the cabinet, and from that determine the required position of the hanging bar.
2. Hold the hanging bar in position, using a spirit level to ensure it is level.
3. Use a pencil to mark the position of the 3 holes on the wall.
4. Place the hanging bar to one side, and drill the holes with a suitable drill bit.
5. Insert wall plugs into the holes, ensuring they are flush to the wall.
6. Place the hanging bar onto the wall, lining up the 3 holes with the wall plugs.
7. Secure the hanging bar to the wall using the supplied screws.

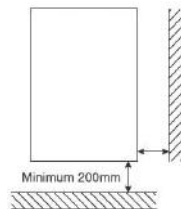


8. You will now be able to hang the cabinet. Carefully lower the cabinet onto the hanging bar, ensuring that it is secure and will not slide.
9. Open the cabinet door and mark the wall with a pencil through the security hole on the back panel.
10. Remove the cabinet, drill the hole then place a wall plug into the hole you have just drilled.
11. Hang your cabinet back up onto the hanging bar and ensure that the in the cabinet is lined up with the wall plug.
12. The cabinet should now be connected to a suitable fused spur following current regulations and guidance. We would advise for this to be situated directly behind the cabinet below the hanging bar. When connecting ensure that enough cable is left to allow the cabinet to be safely removed from the hanging bar.
13. Secure the cabinet to the wall using a screw through the security hole and into the wall plug you previously installed.



SENSOR CONSIDERATIONS

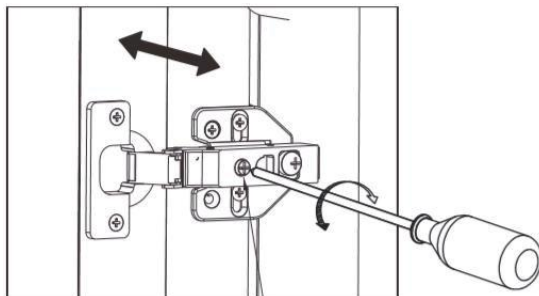
The cabinet must be mounted a minimum of 200mm away from any solid or reflective surface



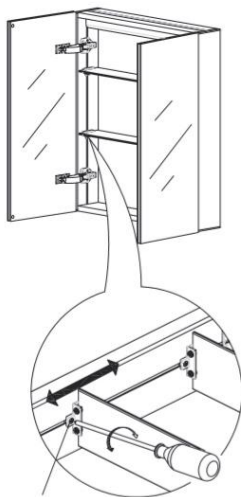
DOOR ADJUSTMENT

If the door is not level, you can adjust it using the hinge screw.

Turning the screw clockwise will push the door right, and turning anticlockwise will pull it right.



SHELF ADJUSTMENT



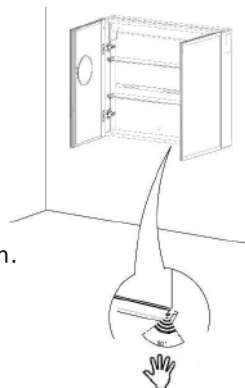
Loosen the snap screw on the shelf to adjust the shelf position.

Once the shelf is in the correct position and level the screw should then be re tightened.

OPERATION

To activate the LED lighting, demister pad and Wireless speaker, pass your hand under the bottom right hand corner of the cabinet at a distance of 50mm maximum.

To pair your phone to the Wireless speaker system please access your phones Wireless connection option via your settings and a list of devices will be shown. Locate "Mirror-BT" and select it. Your phone will now be paired to the speakers



SHAVER SOCKET

SHAVERS



ONLY

Your cabinet comes with an inbuilt shaver socket located inside the unit. This socket is only designed for use with shavers and other low voltage items designed to be powered from a shaver socket.

Once the cabinet is connected to the mains, the shaver socket is ready to use.

CLEANING AND MAINTENANCE

Never use products containing bleach or abrasive cleaners, as these will have a detrimental effect on the appearance and lifespan of the product.

Use a clean micro fibre cloth to clean the mirror.

DISPOSAL

Recycling facilities are now available for all customers at which you can deposit your old electrical products. Customers will be able to take any old electrical equipment to participating sites run by their local councils.

Please remember that this equipment will be further handled during the recycling process, so please be considerate when depositing your equipment. Please contact the local council for details of your local household waste recycling centres.



At the time of printing the product contains no substances listed within Annex XIV of the Reach Regulations (EC) 1907/2006. In accordance with Article 59 of the same regulation the following substances are contained within the product at permitted levels: Cadmium.

As a responsible manufacturer the regulations are monitored to ensure continued compliance. Further information can be provided upon request.

TECHNICAL SPECIFICATION

Model	BeBa_27590	BeBa_27591	BeBa_27592
WxHxD (mm)	600x700x138	800x700x138	1200x700x138
Net Weight (Kg)	17.5	22.1	32.8
Power Cord length (cm)	80	95	105
Rated Power (W)	54	62	63
IP Rating	IP44		
Input	220 - 240V, 50 Hz		
Shaver Socket Output	230V, 50Hz, 80mA		

This product contains a light source of energy efficiency class<F>.

For more information

- visit betterbathrooms.com
- email Support@Betterbathrooms.com
- call 0330 390 3062
- write to Trident Business Park, Neptune Way, Huddersfield, HD2 1UA

**better
bathrooms**

Part of the BuyItDirect Group